



Assistant Commandant for Capability Office of Boat Forces



Acquisition Directorate Boat Acquisition Program

USCG Boat Program Discussion

06 Dec 2019

CDR Carlos Crespo
Chief, Platform Division
Office of Boat Forces

Mr. Mark Porvaznik
Program Manager
Boat Acquisition Program

Ms. Jen Sokolower
Contracting Officer
Office of Contract Ops

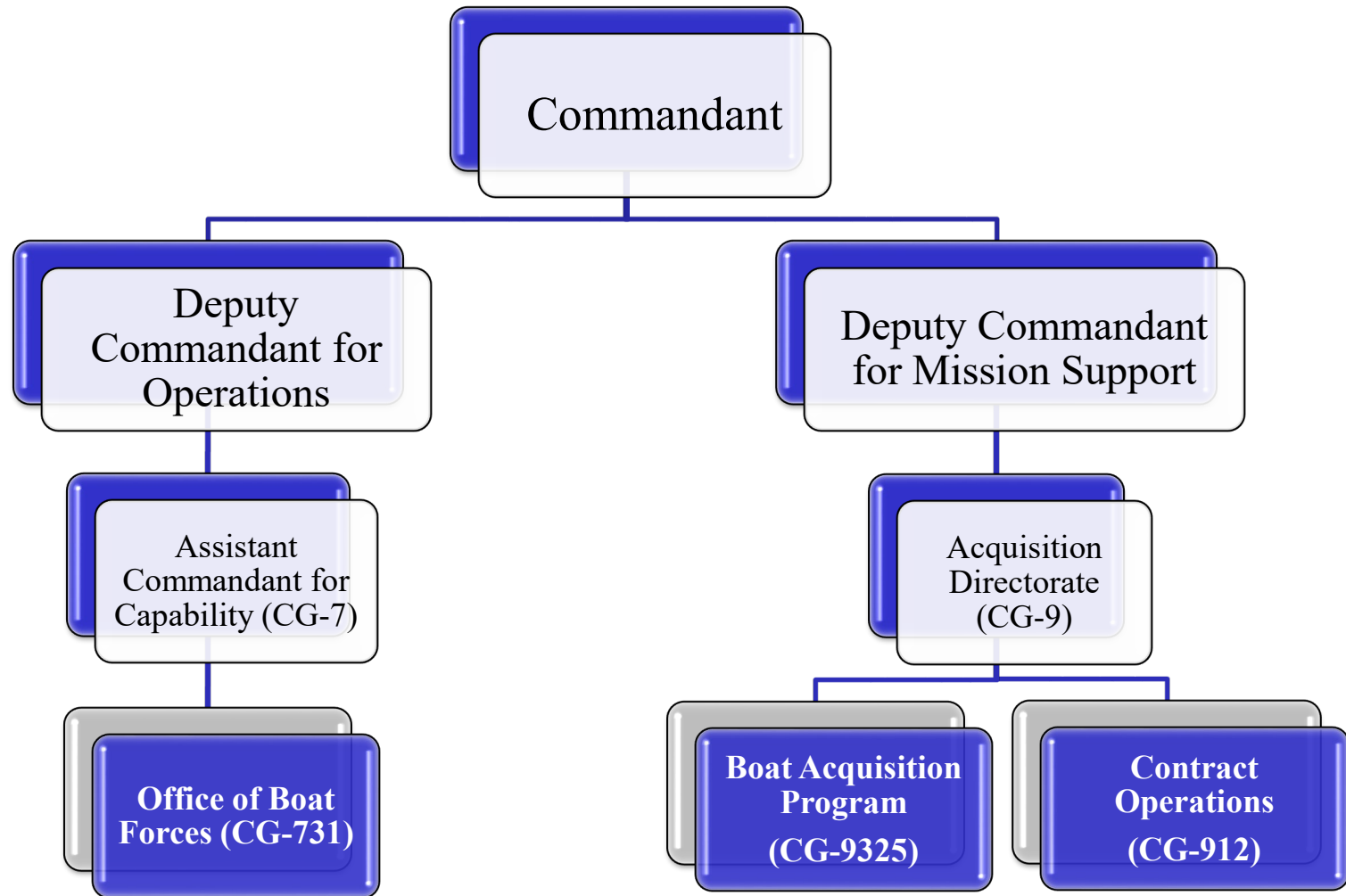


Outline

- **USCG Organization**
- **Boat Forces Fleet**
- **Boat Acquisitions**
- **CB-OTH V, TANB, & CB-LRI III**
- **Discussion Topics**
- **Proposal Observations**
- **Questions**



Organization Overview



Boat Forces Fleet

1,822 Hulls / 48 Boat Classes / 261 Locations / 551 Units In some stage of acquisition

ATON BOATS



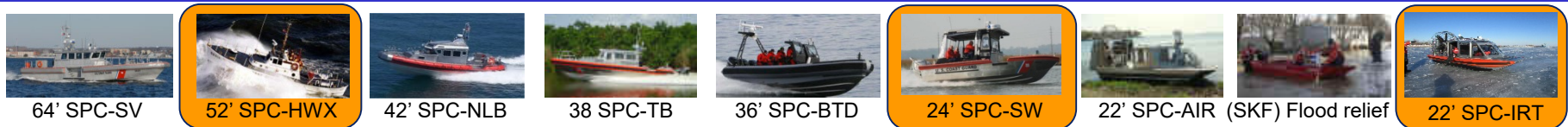
CUTTER BOATS



RESPONSE BOATS



SPECIAL PURPOSE CRAFTS



Active Programs (award/qty)

- **47' Motor Life Boat SLEP** (Aug 2019, up to 107 boats)
 - **35' Long Range Interceptor II** (2012, 11 boats)
 - **29' Response Boat Small II** (2011, 370 boats)
 - **26' Cutter Boat Over the Horizon IV** (2011, up to 114 boats)
 - **22' Cutter Boat Large** (Aug 2018, up to 46 boats)
 - **SPC-Shallow Water II** (Sep 2019, up to 65 boats)
 - **SPC-Ice Rescue Transport** (Sep 2017, up to 13 boats)
 - **SKF-ICE** (Aug 2018, up to 67 boats)
- ☐ ~800 boats



Future Programs

- Programs in Source Selection: 0
- Programs with Active RFP: 0
- Programs with Active RFI: 3
 - Cutter Boat Over-The-Horizon Gen V (~200)
 - Trailerable Aids-To-Navigation Boat (~90)
 - Long Range Interceptor Gen III (~15)
- In Development (3-5 years out)
 - Large Aids-To-Navigation Boats (~30)
 - Special Purpose Craft-Law Enforcement (~60)
 - Special Purpose Craft-Heavy Weather (~4)
 - Response Boat Small Gen III (~400)

☐ ~800 boats



26' CB-OTH IV



TANB

OTH V Scope

- **Deliver ~ 200 CB-OTH Vs between 2021 and 2031**
- **Primary Cutter Boat for Major Coast Guard Cutters**
 - **National Security Cutter (NSC), 02 each**
 - Stern Launch, Single Point Davit, Dual Point Davit
 - **Polar Security Cutter (PSC), 02 each**
 - Dual Point Davit
 - **Offshore Patrol Cutter (OPC), 03 each**
 - Dual Point Davit
 - **Fast Response Cutter (FRC), 01 each**
 - Stern Launch
 - **Legacy Medium Endurance Cutters (WMEC), 01 each**
 - Dual Point Davit



OTH V Notional Characteristics

- **Dimensions**

- Length: 25.5 feet
- Beam: 8.5 feet
- Weight: ~7500 lbs (full fuel, no personnel)

- **Performance**

- Range: 150 NM (with 10% reserve)
- Top Speed: 38 knots

- **Equipment**

- Seating: Shock Mitigating for 05, designated for 07 additional
- Navigation: Scalable Integrated Navigation System-2 with radar
- Comms: HF, UHF, VHF, AIS
- Propulsion: Diesel Engine with Waterjet

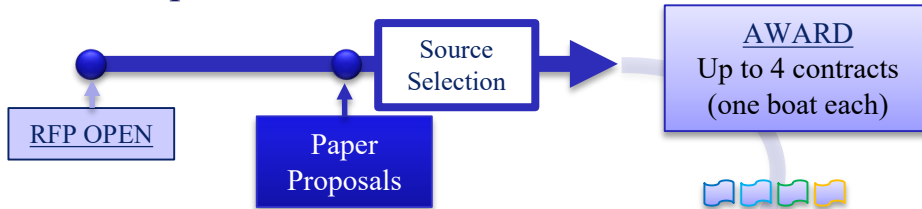
- **Construction**

- Stability: ISO 12217 (2015)
- Structure: ISO 12215 (2019) 12-15 year service life
- Material: Aluminum Hull
- Structure: Strengthened bow & forward hull, with bow capture horn

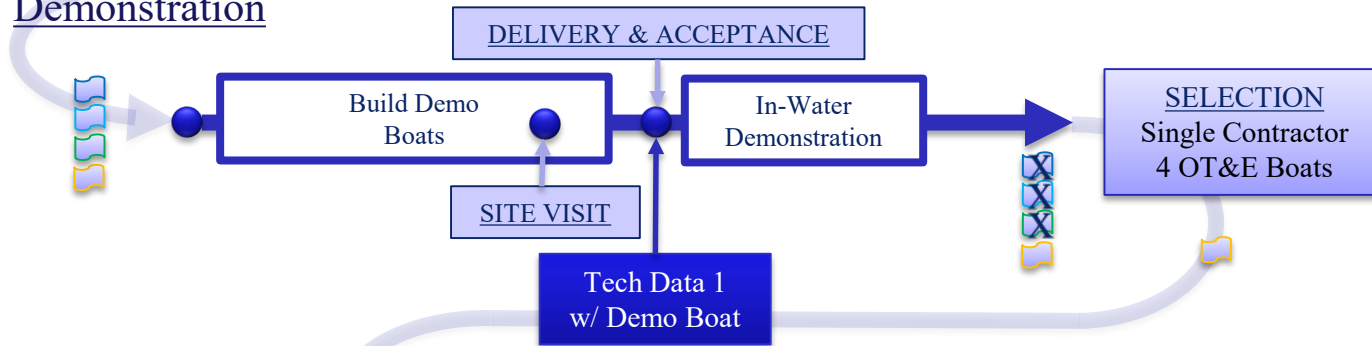


OTH V Notional Approach

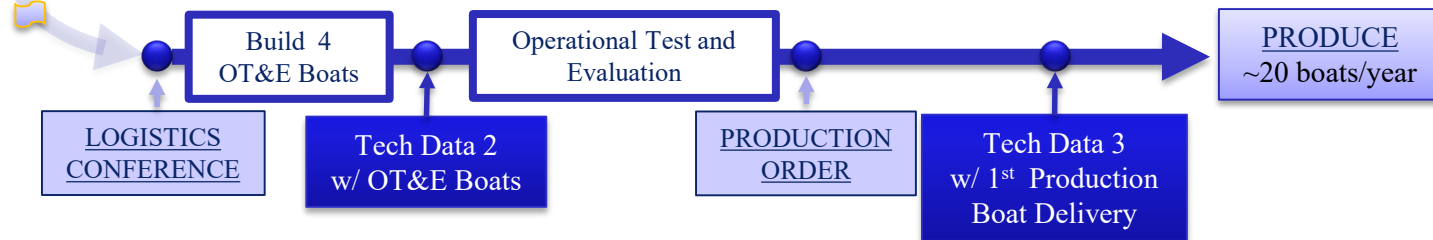
Written Proposal



Demonstration



Selected Contract Continuation



OTH V Notional Schedule

❑ 2019

- 07 Nov 19 – Released RFI USCG-RFI-OTHV-2020-1

❑ 2020

- Feb/Mar – RFP
- Apr/May – Proposals
- Sep/Oct – Award (multiple IDIQs)

❑ 2021

- Apr-Jun – Conduct In-Water Demonstration
- Nov/Dec – Select best value boat

❑ 2022

- May/Jun – Deliver OT&E Boats (4 boats)

❑ 2023

- Production deliveries (12 to 24 per year)



TANB II Notional Scope

- **Deliver ~90 TANBs over a 5 year contract period**
- **Deployed to Aids-to-Navigation Teams (ANT)**
 - Dual-outboard engine
 - Console with T-top or similar structure for working fixed aids.
 - Davit with electric winch and 500 lbs safe working load



TANB

TANB II Notional Characteristics

- **Dimensions**

- Length: 25 feet
- Beam: 8.5 feet
- Weight: ~10,000 lbs (full fuel, no personnel, with trailer)
- Draft: 2.5 feet maximum

- **Performance**

- Range: 150 NM at 25 knots (with 10% reserve)
- Top Speed: 30 knots

- **Equipment**

- Seating: Shock Mitigating for 4, designated for 4 additional
- Navigation: Scalable Integrated Navigation System-2 with radar
- Comms: Government / Commercial VHF
- Propulsion: Twin 4-Stroke Outboards

- **Construction**

- Stability: ISO 12217 (2015)
- Structure: ISO 12215 (2019)
- Material: Aluminum
- Other: Console, top for crew protection, platform for working aids



TANB II Notional Schedule

❑ 2019

- 26 Nov 19 – Released RFI USCG-RFI-TANBII-2020-1

❑ 2020

- Aug/Sep– RFP
- Oct/Nov– Proposals

❑ 2021

- Mar/Apr– Award (multiple IDIQs)
- Aug-Nov– Conduct In-Water Demonstration

❑ 2022

- May/June– Select best value boat
- Nov/Dec– Deliver OT&E Boats (4 boats)

❑ 2023

- Production deliveries (30 boats per year)



LRI III Notional Scope

- **Deliver ~15 LRI III's between 1QFY22 and 1QFY27**
- **Deployed on National Security Cutter**
 - Dual-engine, water jet driven
 - Semi-enclosed cabin boat that operates beyond sight of the parent cutter with enhanced crew protection, and increased capability for passenger and cargo transport.



35' CB-LRI II



LRI III Notional Characteristics

- **Dimensions**

- Length: 33.5 feet
- Beam: 10.8 feet
- Weight: ~15,500 lbs (full fuel, no personnel)

- **Performance**

- Range: 150 NM (with 10% reserve)
- Top Speed: 42 knots

- **Equipment**

- Seating: Shock Mitigating for 06, designated for 06 additional
- Navigation: Scalable Integrated Navigation System-2 with radar
- Comms: HF, UHF, VHF, AIS
- Propulsion: Twin Diesel Engine with Waterjet

- **Construction**

- Stability: ISO 12217 (2015)
- Structure: ISO 12215 (2019) 15 year service life
- Material: Aluminum Hull
- Structure: Strengthened bow & forward hull, with bow capture horn



LRI III Notional Schedule

- ❑ **2019**
 - Nov – Released RFI USCG-RFI-LRI-III-2020-1
- ❑ **2020**
 - Oct/Nov – RFP
- ❑ **2021**
 - Dec/Jan – Proposals
 - May/Jun – Award (single IDIQ)
 - Nov/Dec – Deliver and conduct OT&E (production stops during IT&E)
- ❑ **2022**
 - Jun/Jul – Production Deliveries (~ 5 / year)



Discussion Topics

Topic	Discussion Points
Water Over the Bow	Changes to hull form, bow horn height, sheer, loading sensitivity
Waterjet Control Systems	Improved / more intuitive / low speed maneuverability
Water Intrusion Prevention	Seal material, enclosures, seal design, gaskets
Boat Construction	Decrease failures from notch-impact & fatigue, Decreased weight, composite deck house
Diesel Outboards	Reliability, maintainability, ready for fielding
HVAC	Heat and cooling for improved crew readiness
Notch-Friendly Propulsion	Alternatives to waterjets
Technical Data Package	Improved interim support
Real-Time Operating Limit Feedback	Real-time (and recorded) indication of accelerations on boat / crew. Warning points, alarm points, adjustable set points





Proposal Observations

- **Submission Instructions** – Follow them to a tee
- **Requirements** – Explain how you will meet/exceed
- **RFP Changes** – Ask early/before closing date
- **Pre-proposal boats** – If offered, explain value to Government
- **Format/Organization** – Mirror RFP sequence
- **Rounding Errors** – Nothing less than a penny
- **Innovation** – Consider submitting multiple proposals
- **Competition** – Follow instructions to remain competitive



Questions?

- **Feedback or Questions after the WorkBoat Conference can be submitted to: CG-9123boatbuy@uscg.mil**

